

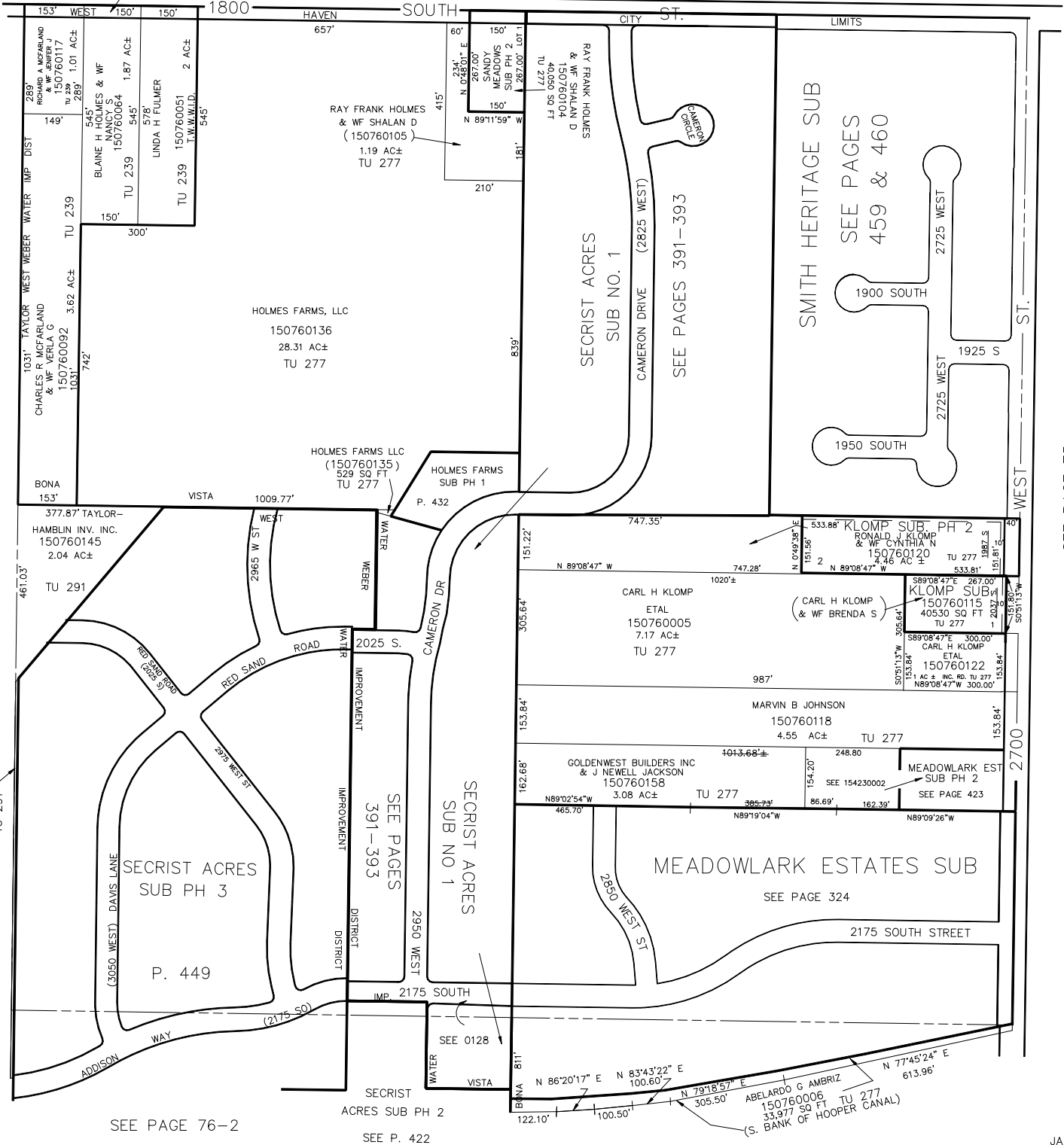
SECTION 27, T.6N., R.2W., S.L.B. & M.

TAXING UNITS: 239,277,291

IN WEST HAVEN CITY SCALE 1" = 200'

SEE PAGE 60-2

WEBER COUNTY (150760063) TU 239



SEE PAGE 76-5

SEE PAGE 75

M & D DEVELOPERS LLC (150760137) 8405 SQ FT TU 291

SEE PAGE 76-2

SEE P. 422